

# Ceram.x Spectra™ ST flow

## Flowable Composite Restorative

### Ordering Information

#### COMPULA® INTRODUCTORY KIT 607.01.800

24 Compula® Tips (0.25g ea)  
 4 shade A1 (= VITA® shades A1; B1; C1)  
 4 shade A2 (= VITA® shades A2; B2; D2)  
 8 shade A3 (= VITA® shades A3; C2; D3; D4)  
 4 shade A3.5 (= VITA® shades A3.5; B3; B4; C3)  
 4 shade A4 (= VITA® shades A4; C4)  
 Compules Tips Gun  
 i-shade label



#### SYRINGE INTRODUCTORY KIT 607.01.820

5 Syringes (1.8g each) Shades A1-A4  
 50 syringe tips  
 i-shade label



#### COMPULA® TIPS REFILLS

16 Compula® Tips (0.25g ea)

Shades

|  |            |
|--|------------|
| A1 (= VITA® shades A1; B1; C1)         | 607.01.801 |
| A2 (= VITA® shades A2; B2; D2)         | 607.01.802 |
| A3 (= VITA® shades A3; C2; D3; D4)     | 607.01.803 |
| A3.5 (= VITA® shades A3.5; B3; B4; C3) | 607.01.805 |
| A4 (= VITA® shades A4; C4)             | 607.01.804 |
| BW (Bleach White)                      | 607.01.806 |
| D1 (Opaque Dentin)                     | 607.01.807 |
| D3 (Opaque Dentin)                     | 607.01.808 |
| E1 (Translucent Enamel)                | 607.01.809 |



#### SYRINGE REFILLS

2 Syringes (1.8g ea)  
 25 Syringe Tips

Shades

|  |            |
|--|------------|
| A1 (= VITA® shades A1; B1; C1)         | 607.01.821 |
| A2 (= VITA® shades A2; B2; D2)         | 607.01.822 |
| A3 (= VITA® shades A3; C2; D3; D4)     | 607.01.823 |
| A3.5 (= VITA® shades A3.5; B3; B4; C3) | 607.01.825 |
| A4 (= VITA® shades A4; C4)             | 607.01.824 |
| BW (Bleach White)                      | 607.01.826 |
| D1 (Opaque Dentin)                     | 607.01.827 |
| D3 (Opaque Dentin)                     | 607.01.828 |
| E1 (Translucent Enamel)                | 607.01.829 |



#### SYRINGE TIP REFILL 607.01.819

50 syringe tips



# FLOWABLE SIMPLIFIED.



Ceram.x Spectra™ ST flow  
 Flowable Composite Restorative

To Learn More, Visit  
<http://dentsplysirona.com/CeramxSpectraSTflow>

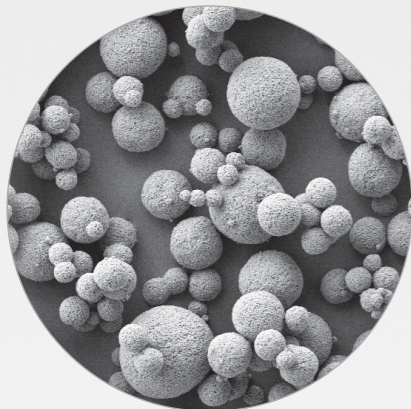
Ceram.x Spectra™ ST flow  
Flowable Composite Restorative

# A simpler, more versatile esthetic flowable composite.

Thanks to our unique SphereTEC® technology, Ceram.x Spectra™ ST flow composite offers greater simplicity and versatility than you've ever seen in an esthetic flowable.

- ➔ STREAMLINED SHADE COVERAGE
- ➔ OPTIMIZED HANDLING
- ➔ LASTING ESTHETICS

Ceram.x Spectra™ ST flow material, powered by SphereTEC® technology.



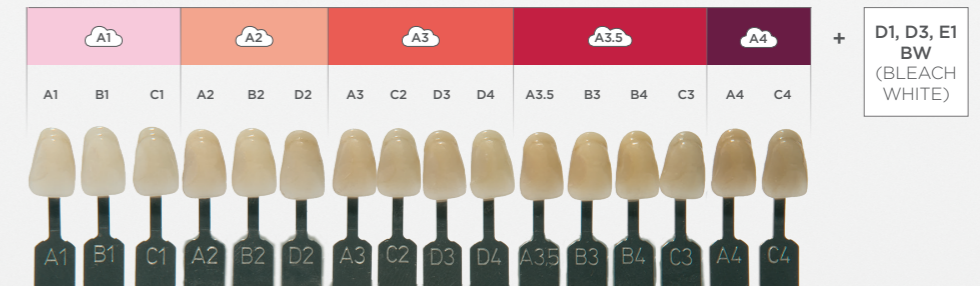
SEM picture of SphereTEC® spherical prepolymerized fillers. Their shape and size distribution optimize the material's flow-on-demand handling.

ONLY OUR PROPRIETARY SPHERETEC® TECHNOLOGY CAN DELIVER THESE BENEFITS:

## Five Shades cover the full 16-shade VITA® range

- Chameleon blending enables universal CLOUD shades A1-A4 to cover the full VITA<sup>1</sup> range
- Bleach white plus two opaque dentin shades and one translucent enamel shade accommodate special cases
- Flawless shade match to our full Ceram.x Spectra™ ST & Ceram.x Spectra™ ST Effects universal composite portfolio

Universal CLOUD Shades  
VITA® SHADES<sup>1</sup>



## Flow-on-demand handling provides optimum versatility

- Stays put until flow behavior initiates on your command with instrumentation
- Convenient application in Compula® Tips or Syringe



## High strength, polish, and stain resistance

- SphereTEC® technology delivers trusted strength
- Resistant to staining from common colorants such as coffee, tea, and red wine
- Quickly and easily polishes to a high gloss



**CERAM.X SPECTRA™ ST FLOW COMPOSITE.**  
A NEW SHADE OF VERSATILITY.

1. VITA is not a registered trademark of Dentsply Sirona.