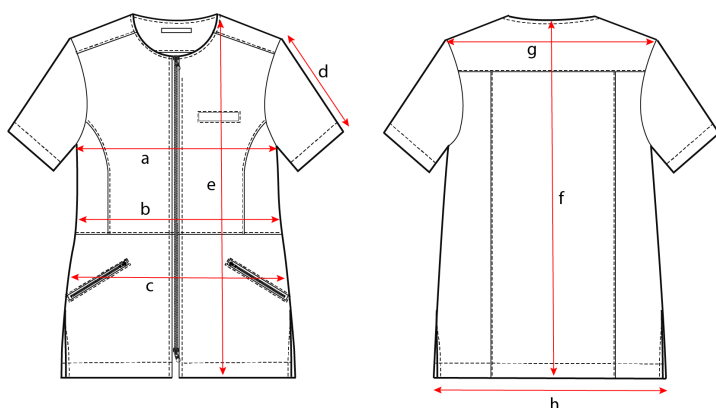


PLAGGMÅTT

Vänligen notera att dessa mått är plaggmått, ej kroppsmått.
Måtten är tagna rakt över när plagget ligger platt på marken.
Måtten är ungefärliga och kan variera något från plagg till plagg.

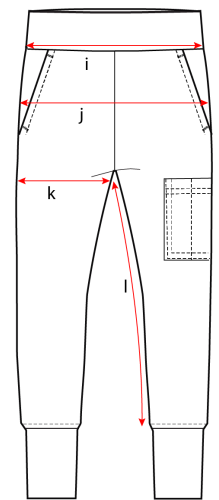
OBS. Notera att det skiljer mellan hela och halva (1/2) mått.
Hela mått mäts runt om hela plagget, dvs det halva måttet dubblas.



a = 1/2 CHEST
b = 1/2 WAIST
c = 1/2 HIP
d = SLEEVE LENGHT FR SHOULDER SEAM
e = BODY LENGHT FR TOP OF SHOULDER
f = CENTERBACK LENGHT
g = SHOULDER AT BACK
h = 1/2 BOTTOM WIDTH

W1 - Bussarong	XS	S/XS	M/S	L/M	XL/M	XXL/XL	XXXL/XXL
CHEST	87.0	93.0	99.0	105.0	111.0	117.0	123.0
SLEEVE LENGHT FR SHOULDER SEAM	22	23	24	25	26	27	28
SHOULDER AT BACK	37	39	41	43	45	47	49
CENTERBACK LENGHT	65	67	69	71	73	76	77
W2 - Zip Top Short Sleeve	XS	S	M	L	XL		
1/2 CHEST	39.5	45.5	51.5	57.5	63.5		
WAIST	70.0	76.0	82.0	88.0	94.0		
SLEEVE LENGHT FR SHOULDER SEAM	19.0	20.0	21.0	22.0	23.0		
CENTERBACK LENGHT	71.5	73.5	75.5	78.0	80.5		
W3 - Zip Dress Short Sleeve	XS	S	M	L	XL		
1/2 CHEST	42.5	45.5	48.5	51.5	54.5		
WAIST	70.0	76.0	82.0	88.0	94.0		
HIP	89.0	95.0	101.0	107.0	113.0		
SLEEVE LENGHT FR SHOULDER SEAM	19.0	20.0	21.0	22.0	23.0		
CENTERBACK LENGHT	90.0	92.0	94.0	96.5	99.0		
W4 - Zip Top Half Sleeve	XS	S	M	L	XL		
1/2 CHEST	39.5	45.5	51.5	57.5	63.5		
WAIST	70.0	76.0	82.0	88.0	94.0		
SLEEVE LENGHT FR SHOULDER SEAM	29.0	30.0	31.0	32.0	33.0		
CENTERBACK LENGHT	71.5	73.5	75.5	78.0	80.5		
W5 - Zip Dress Half Sleeve	XS	S	M	L	XL		
1/2 CHEST	39.5	45.5	51.5	57.5	63.5		
WAIST	70.0	76.0	82.0	88.0	94.0		
HIP	89.0	95.0	101.0	107.0	113.0		
SLEEVE LENGHT FR SHOULDER SEAM	29.0	30.0	31.0	32.0	33.0		
CENTERBACK LENGHT	90.0	92.0	94.0	96.5	99.0		
W6 - Wrap top	XS	S	M	L	XL		
CHEST	84.0	90.0	96.0	102.0	108.0		
WAIST	72.0	78.0	84.0	90.0	96.0		
SLEEVE LENGHT FR SHOULDER SEAM	19.0	20.0	21.0	22.0	23.0		
CENTERBACK LENGHT	68.0	70.0	72.0	74.5	77.0		
W7 - Wrap Dress	XS	S	M	L	XL		
CHEST	82.0	88.0	94.0	100.0	106.0		
WAIST	72.0	78.0	84.0	90.0	96.0		
SLEEVE LENGHT FR SHOULDER SEAM	29.0	30.0	31.0	32.0	33.0		
CENTERBACK LENGHT	89.0	91.0	93.0	95.5	98.0		

W8 Ladies Soft Tank Top	XS	S	M	L	XL
1/2 CHEST	36.0	39.0	42.0	45.0	48.0
1/2 WAIST	31.5	34.5	37.5	40.5	43.5
BODYLENGTH FR TOP OF SHOULDER	60.0	62.0	64.0	66.5	69.0
W9 - Ladies Soft Short Sleeve	XS	S	M	L	XL
1/2 CHEST	40.0	43.0	46.0	49.0	52.0
1/2 WAIST	35.0	38.0	41.0	44.0	47.0
BODYLENGTH FR TOP OF SHOULDER	57.0	59.0	61.0	63.5	66.0
SLEEVE LENGTH FR SHOULDER SEAM	19.3	20.25	21.3	22.3	23.3
W10 - Ladies Soft 3/4 Sleeve	XS	S	M	L	XL
1/2 CHEST	40.0	43.0	46.0	49.0	52.0
1/2 WAIST	35.0	38.0	41.0	44.0	47.0
BODYLENGTH FR TOP OF SHOULDER	57.0	59.0	61.0	63.5	66.0
SLEEVE LENGTH FR SHOULDER SEAM	42.0	43.5	45.0	46.5	48.0
W11 - Ladies Easy Pants	XS	S	M	L	XL
WAIST RELAXED	62.0	66.0	70.0	74.0	78.0
HIP	94.0	100.0	106.0	112.0	118.0
THIGH	58.5	61.0	63.5	66.0	68.5
INSEAM, EXCL RIB	65.0	65.0	67.0	67.0	69.0
W12 - Mens Easy Pant	XS	S	M	L	XL
WAIST RELAXED	70.0	74.0	78.0	82.0	86.0
HIP	94.0	100.0	106.0	112.0	118.0
THIGH	60.5	63.0	65.5	68.0	70.5
INSEAM	66.0	66.0	68.0	68.0	70.0
W13 - Ladies Stretch Jeans	XS	S	M	L	XL
WAIST RELAXED	66.0	70.0	74.0	78.0	82.0
HIP	78.5	84.5	90.5	96.5	102.5
THIGH	50.0	52.5	55.0	57.5	60.0
INSEAM	79.5	79.5	81.5	81.5	83.5
W14 - Ladies Straight Pants	XS	S	M	L	XL
WAIST RELAXED	69.0	73.0	77.0	81.0	85.0
HIP	77.0	83.0	89.0	95.0	101.0
THIGH	52.0	55.0	58.0	61.0	64.0
INSEAM	75.5	75.5	77.5	77.5	79.5
W15 - Mens Stretch Jeans	XS	S	M	L	XL
WAIST RELAXED	74.0	79.0	84.0	90.0	96.0
HIP	85.0	90.0	96.0	102.0	108.0
THIGH	55.0	57.5	60.5	63.5	66.5
INSEAM	79.0	81.0	83.0	85.0	87.0
W16 - Mens Polo Shirt	XS	S	M	L	XL
1/2 CHEST	47.0	50.0	53.0	56.0	59.0
1/2 BOTTOM WIDTH	47.0	50.0	53.0	56.0	59.0
BODYLENGTH FR TOP OF SHOULDER	64.0	66.0	68.0	70.5	73.0
SLEEVE LENGTH FR SHOULDER SEAM	21.0	22.0	23.0	24.0	25.0
W19 - Ladies Polo Shirt	XS	S	M	L	XL
1/2 CHEST	40.0	43.0	46.0	49.0	52.0
1/2 WAIST	37.0	40.0	43.0	46.0	49.0
1/2 BOTTOM WIDTH	42.5	45.5	48.5	51.5	54.5
BODYLENGTH FR TOP OF SHOULDER	58.0	60.0	62.0	64.5	67.0
SLEEVE LENGTH FR SHOULDER SEAM	17.0	18.0	19.0	20.0	21.0
W17 - Mens Sweatshirt	XS	S	M	L	XL
1/2 CHEST	46.0	49.0	52.0	55.0	58.0
1/2 BOTTOM WIDTH	47.0	50.0	53.0	56.0	59.0
BODYLENGTH FR TOP OF SHOULDER	65.0	67.0	69.0	71.5	74.0
SLEEVELENGTH FR SHOULDER SEAM	73.0	74.5	76.0	77.5	79.0
W18 - Ladies Sweatshirt	XS	S	M	L	XL
1/2 CHEST	42.0	45.0	48.0	51.0	54.0
1/2 WAIST	40.0	43.0	46.0	49.0	52.0
1/2 BOTTOM WIDTH	46.0	49.0	52.0	55.0	58.0
BODYLENGTH FR TOP OF SHOULDER	58.0	60.0	62.0	64.5	67.0
SLEEVELENGTH FR SHOULDER SEAM	58.0	59.5	61.0	62.5	64.0



i = 1/2 WAIST RELAXED
j = 1/2 HIP
k = 1/2 THIGH
l = INSEAM