



# ONE COAT<sup>®</sup> BOND

Universal light-curing dental adhesive

**All the power you need  
in one drop.**

# ONE COAT BOND: Super Concentrated. One Component. One Step.



*"That's what's so unique about the bond: 100% bond, 0% acetone, 0% ethanol! Coltène's universal, one component, one layer adhesive contains no solvents; your guarantee of successful bonding. ONE COAT BOND is an effective dentine bonding agent comparable to excellent 4<sup>th</sup> and 5<sup>th</sup> generation adhesives. This bond is very easy and quick to use."*



apply for  
20 sec.

Easy, quick, safe.  
A real Bond.



light-cure for  
30 sec.



**No slump – no drip; your guarantee of effective application.**

**Economical and quick.**

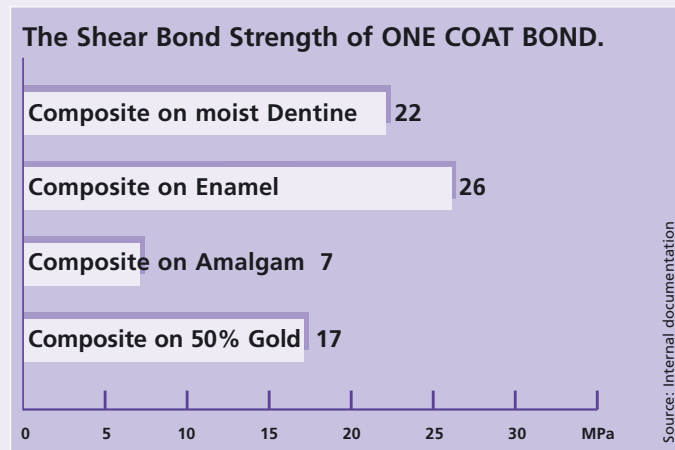
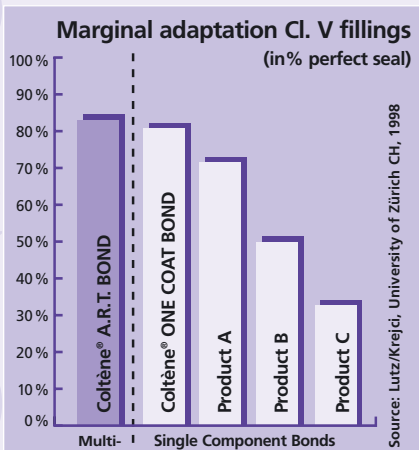
Dispense a minimal amount of ONE COAT BOND from the handy syringe directly onto the brush. The bond stays drip free thanks to its outstanding no slump consistency, thus enabling you to apply the bond easily into every cavity. ONE COAT BOND will become fluid during rubbing in, thus providing an additional visual control of an even layer of bond.

ONE COAT BOND is very economical. One tiny drop is all you need even for large cavities: on average 100 drops per syringe.

ONE COAT BOND requires only one application step. Just one layer is all that is needed for a perfect adhesion and a sealed cavity.

## Universal

In addition to enamel, dentine and composite surfaces, this universal bond can also be used for veneering of precious and non-precious metals, for ceramic and composite repairs, as well as for glass ionomer cement and compomer.

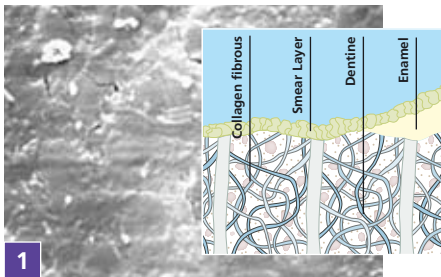


# ONE COAT BOND: The solution without solvent.



"What makes the ONE COAT BOND so attractive to me? **Simplicity**, with just one coat I can achieve excellent clinical results. **No solvents**, the fact that it does not contain any solvents assures me that it will have the same consistency time after time. **Safety**, with ETCHANT 15, I feel comfortable using a total etch technique. **Reliability**, I have achieved superior bonding without post-operative sensitivity."

Nathaniel H. Lenchner, D.D.S., Forest Hills, New York



1 Smear Layer on dentine after cavity preparation.

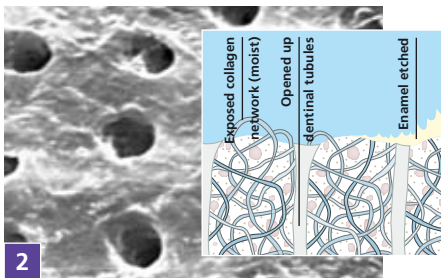


## Easy and fast technique.

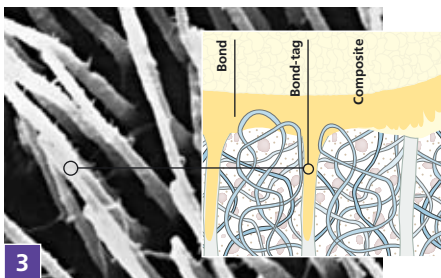
Prior to bond application, the enamel is etched and the smear layer (1) is removed with ETCHANT 15, to obtain good adhesion and perfect marginal seal. The 15% phosphoric acid concentration demineralises the dentine gently (2) and is perfectly adjusted to the newly developed ONE COAT BOND. Then, in only one step, ONE COAT BOND penetrates the exposed collagen network and forms an optimal, dense micromechanical adhesive bridge between tooth structure and composite (3). This hybrid layer (4) seals the dentinal tubules thus minimizing post-operative sensitivities.

## Solvent free – effective and safe.

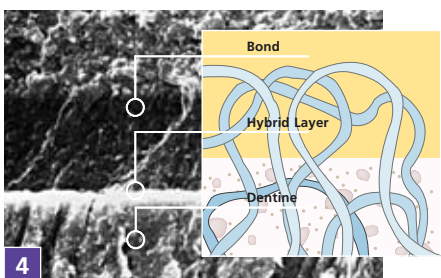
ONE COAT BOND is compatible with water and does not require carrier solvents to displace moisture. Its hydrophilic chemical reaction allows a thorough penetration of collagen fibres and dentinal tubules when the bond is rubbed in. Its well balanced composition guarantees good wetting of the tooth structure and a homogeneous resin layer. The added microfiller provides exceptional high resistance under stress. The bonding mechanism is based on micromechanical retention.



2 Opened up dentinal tubules after etching and rinsing. Exposed moist collagen network.



3 Bond-tags. ONE COAT BOND forms an adhesive bridge between tooth structure and composite.



4 The bonding mechanism is based on micromechanical retention.

# Scientific Studies and results.

## **Zahnfarbene Adhäsive Restaurationen im Seitenzahnbereich**

I. Krejci, F. Lutz, W. Mörmann, Universität Zürich, CH, 1998.

## **Haftkraft von ONE COAT BOND auf Dentin.\*\***

K.-J. Reinhardt, Universität Münster, D.

## **Prüfung eines experimentellen Dentinhaftmittels (ONE COAT BOND) in Kombination mit SYNERGY® Komposite.\*\***

J.F. Roulet, U. Blunck, Universitätsklinikum Charité, Medizinische Fakultät der Humboldt-Universität Berlin, D.

## **In-vitro-Evaluation der Dentinhaftung von ONE COAT BOND im Ausstossversuch.\*\***

B. Haller, Polyklinik für Zahnerhaltung, Universität Ulm, D.

## **Adhesive Fatigue Limit von ONE COAT BOND.\*\***

A. Petschelt, R. Frankenberger, Universität Erlangen-Nürnberg, D.

## **Dentin Bond Strength of Three Composite Resins Using Five Adhesives.**

J.O. Burgess, Louisiana State University, New Orleans, USA. In: Journal of Dental Research, 77B (1998), No 2508.

## **The influence of hybrid layer modification on bond strengths to bovine dentine.**

M.F. Burrow, University of Melbourne, AUS. In: Journal Dental of Research, 77B (1998), No 2088.

## **Two Bonding Systems Regarding Adhesion to Metal and Porcelain.\*\***

J.F. McCabe, University of Newcastle upon Tyne, UK.

## **Evaluation of the interface between one – bottle bonding agents and dentin by cryopreparation and low temperature scanning electron microscopy (LTSEM).**


## **A pilot study on perfused dentinal samples.**

S.J.Paul, University of California, Los Angeles. In: Journal of Dentistry 26 (1998), 511-520.

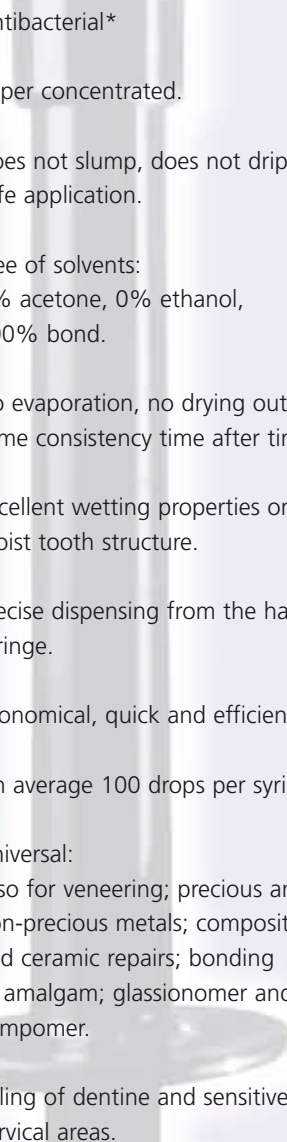
## **Rapport de recherche concernant l'évaluation du système adhésif ONE COAT BOND.\*\***

M. Degrange, Faculté de Chirurgie Dentaire Paris V, F.

\*\* Unpublished studies. Available at Coltène/Whaledent AG on request.



## All the power you need in one drop.

- 
- Antibacterial\*
  - Super concentrated.
  - Does not slump, does not drip, safe application.
  - Free of solvents:  
0% acetone, 0% ethanol,  
100% bond.
  - No evaporation, no drying out,  
same consistency time after time.
  - Excellent wetting properties on  
moist tooth structure.
  - Precise dispensing from the handy  
syringe.
  - Economical, quick and efficient.
  - On average 100 drops per syringe.
  - Universal:  
Also for veneering; precious and  
non-precious metals; composite  
and ceramic repairs; bonding  
to amalgam; glassionomer and  
compomer.
  - Sealing of dentine and sensitive  
cervical areas.

\* test method: Proliferations assay  
by QualityLabs, Germany

# ONE COAT® BOND

**Easy, reliable and economical.**

Coltène's ONE COAT BOND offers an average of 100 fast, reliable adhesions from the handy syringe.



## Order information

### 7880 ONE COAT BOND Kit

ETCHANT 15	2 x 1.2 ml
ONE COAT BOND	1 x 1.2 ml

*Accessories: brushes, application needles, syringe attachment, laminated instructions for use.*

### 7879 ONE COAT BOND Refill 1

1 x 1.2 ml

### 7873 ONE COAT BOND Refill 2

2 x 1.2 ml

### 7878 ETCHANT 15 Refill

4 x 1.2 ml

### 7877 Brushes

50 pcs.

### 7876 Application needles

20 pcs.

### 7874 Bond syringe attachments

10 pcs.

**Order this new bond from your dealer.**

www.coltenewhaledent.com  
© 2007 Coltène/Whaledent AG

**Coltène/Whaledent Ltd.**  
The President Suite-A  
Kendal House, Burgess Hill  
Victoria Way  
West Sussex, RH15 9NF/U.K.  
Tel. +44 (0)1444 235486  
Fax +44 (0)1444 870640  
hq@coltenewhaledent.co.uk

**Coltène/Whaledent AG**  
Feldwiesenstrasse 20  
9450 Altstätten/Switzerland  
Tel. +41 (0)71 757 53 00  
Fax +41 (0)71 757 53 01  
office@coltenewhaledent.ch

**Coltène/Whaledent Inc.**  
235 Ascot Parkway  
Cuyahoga Falls, Ohio 44223/USA  
Tel. +1 330 916 8800  
Fax +1 330 916 7077  
productinfo@coltenewhaledent.com

**coltene**  
**whaledent**